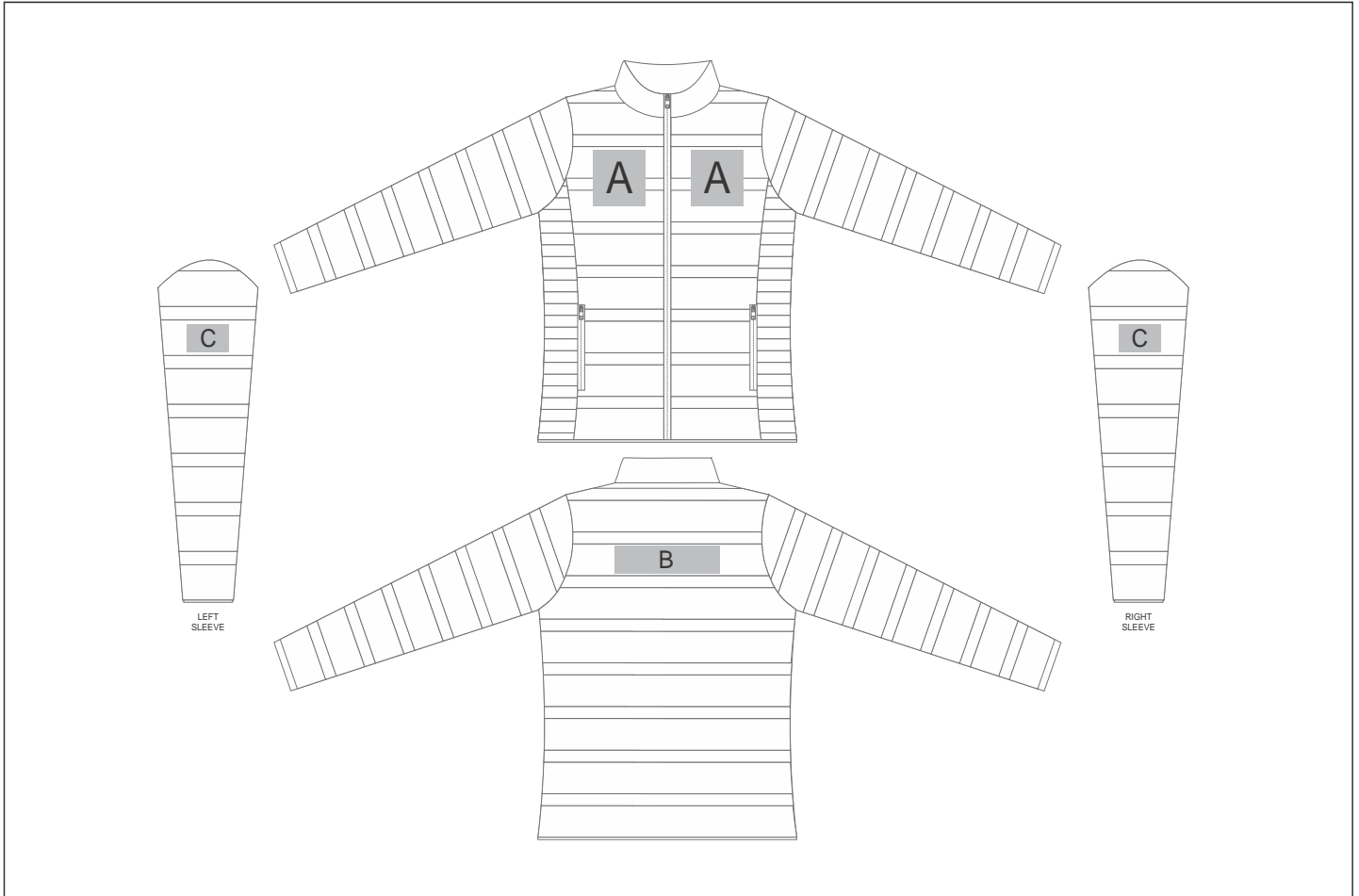


JC-AL-137-A

Ladies Eclipse Jacket



Need to know:

- Includes 1-Position Digital Transfer OR 1-Position Embroidery (setup fees apply)
- **EMB/DTC inclusive parameters:** Left/Right Chest or Back = 100mm x 100mm
- The panels on the garment are inconsistent from Small to XL.
- The logo will be branded in the closest left / right chest and back panel, to the standard left/right

Branding Options:

Position	Branding Method (Branding Code)	No. of Colours	Dimension
A	Embroidery (EMB-A)	N/A	100mm wide x 50mm high
A	Digital Transfer Clothing A6 (DTC-A6)	Full Colour	100mm wide x 100mm high
A	Silicone (STP-A)	N/A	30mm wide x 30mm high
A	Silicone (STP-B)	N/A	50mm wide x 50mm high
A	Silicone (STP-C)	N/A	80mm wide x 80mm high
B	Embroidery (EMB-A)	N/A	200mm wide x 50mm high

B	Digital Transfer Clothing A6 (DTC-A6)	Full Colour	148mm wide x 50mm high
B	Digital Transfer Clothing A5 (DTC-A5)	Full Colour	200mm wide x 50mm high
B	Silicone (STP-A)	N/A	30mm wide x 30mm high
B	Silicone (STP-B)	N/A	50mm wide x 50mm high
B	Silicone (STP-C)	N/A	80mm wide x 80mm high
B	Silicone (STP-D)	N/A	120mm wide x 40mm high

C	Embroidery (EMB-A)	N/A	80mm wide x 50mm high
C	Digital Transfer Clothing A6 (DTC-A6)	Full Colour	80mm wide x 50mm high
C	Silicone (STP-A)	N/A	30mm wide x 30mm high
C	Silicone (STP-B)	N/A	50mm wide x 50mm high